

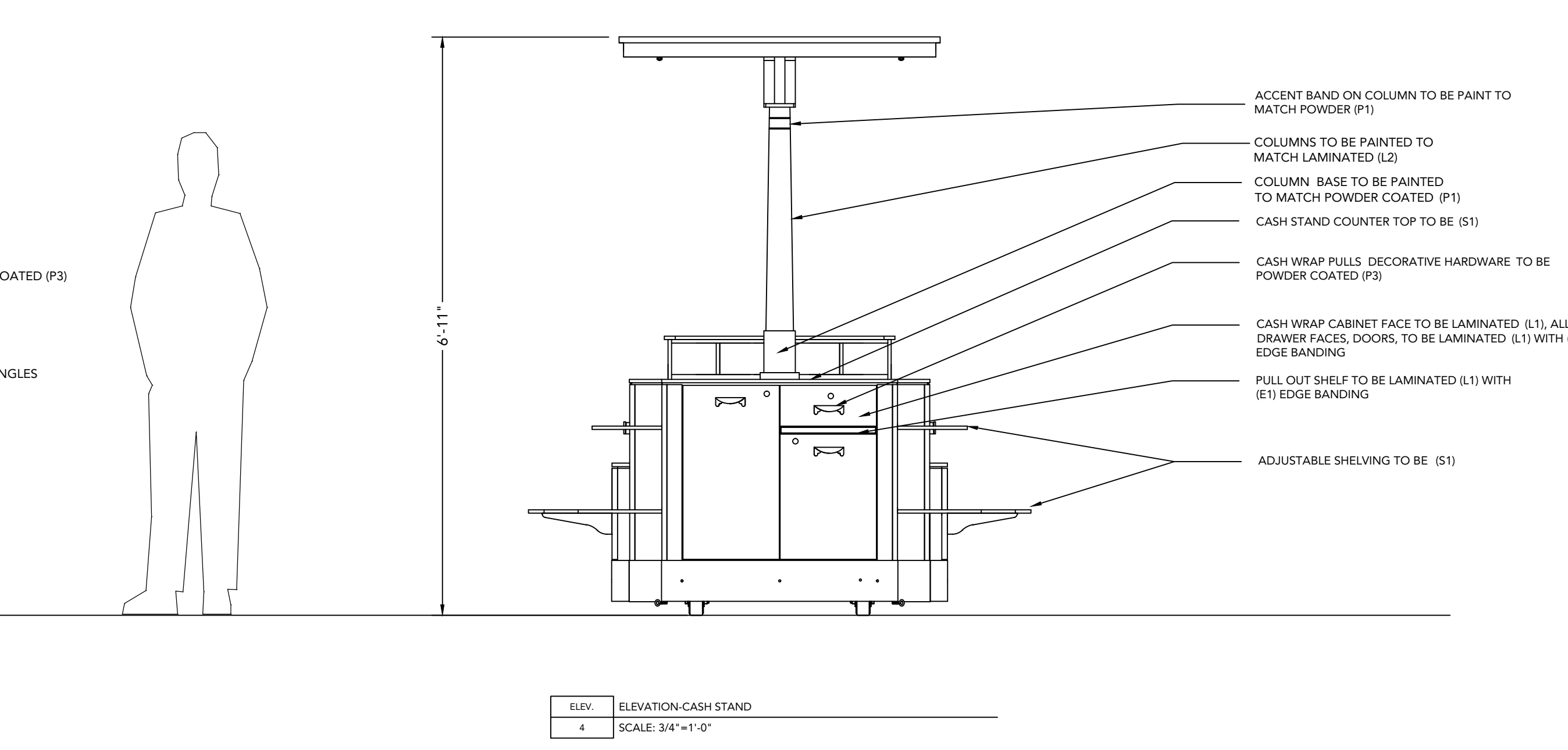
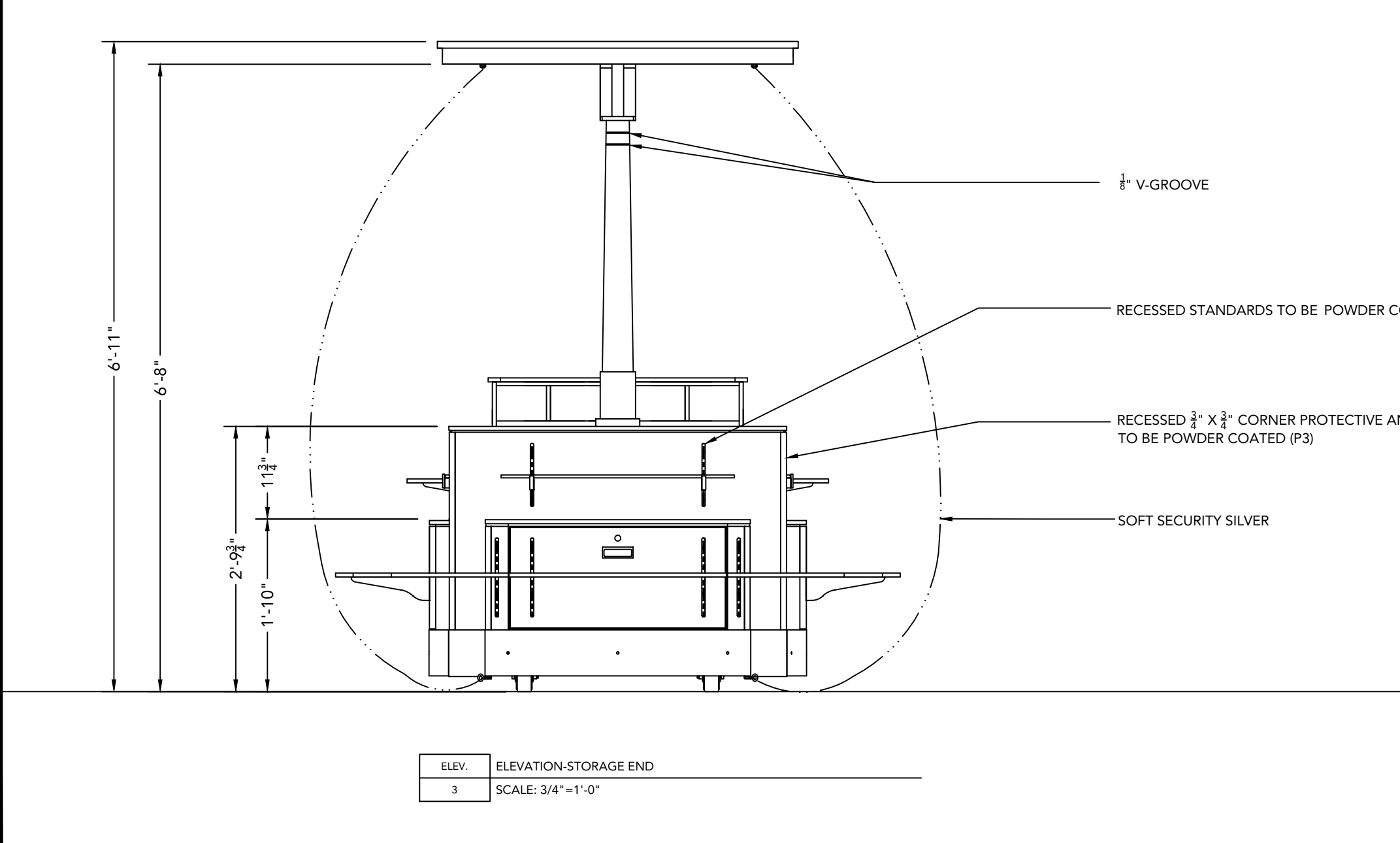
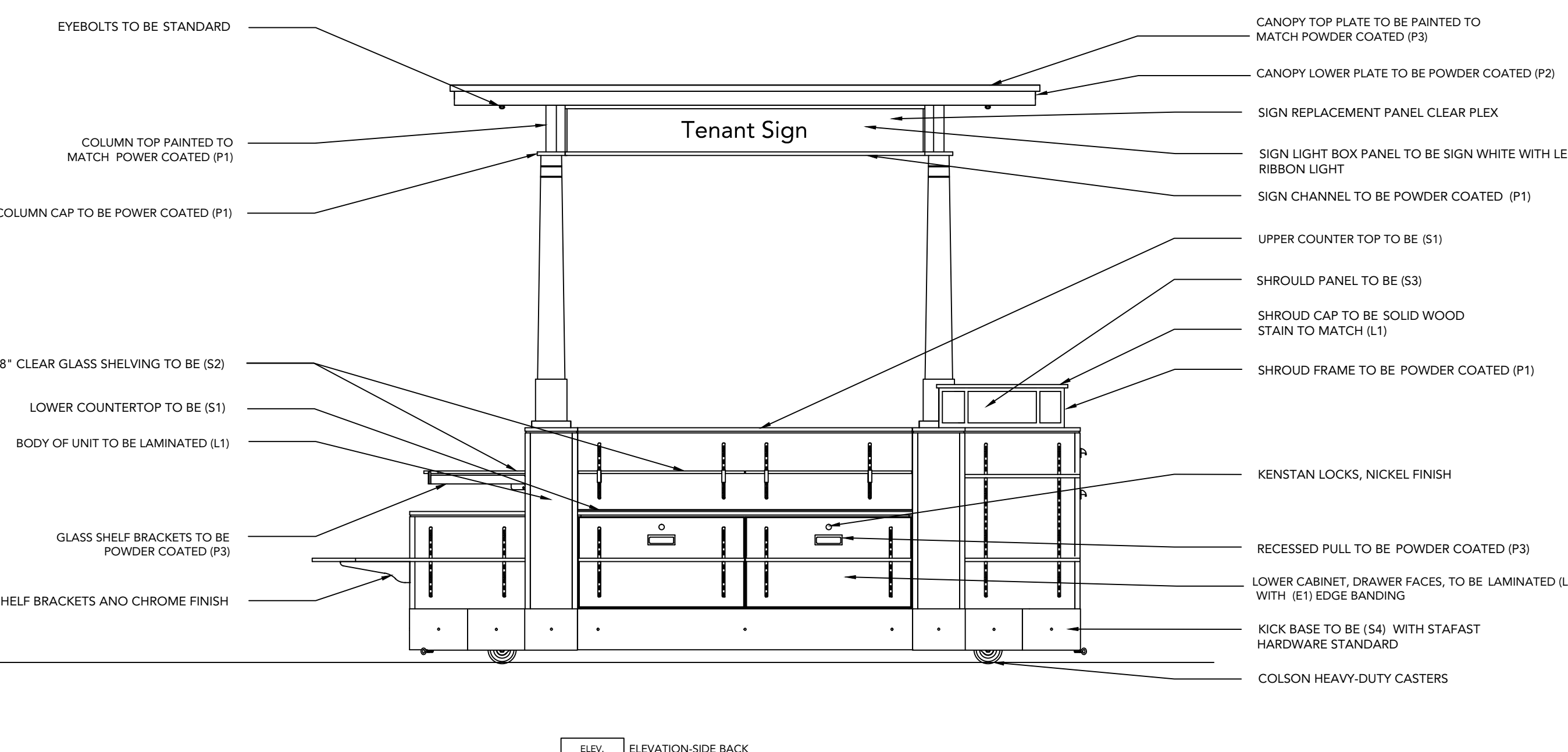
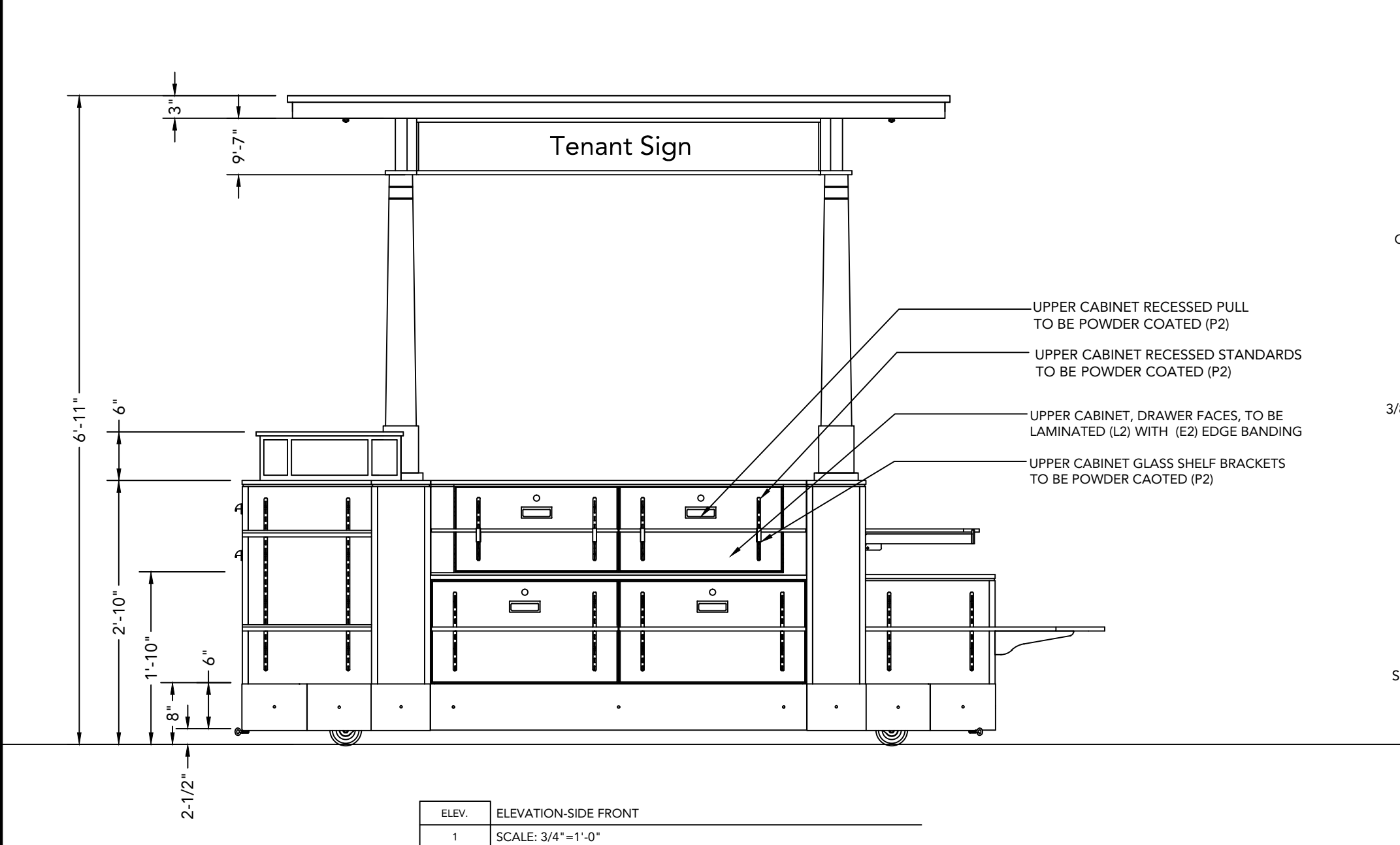
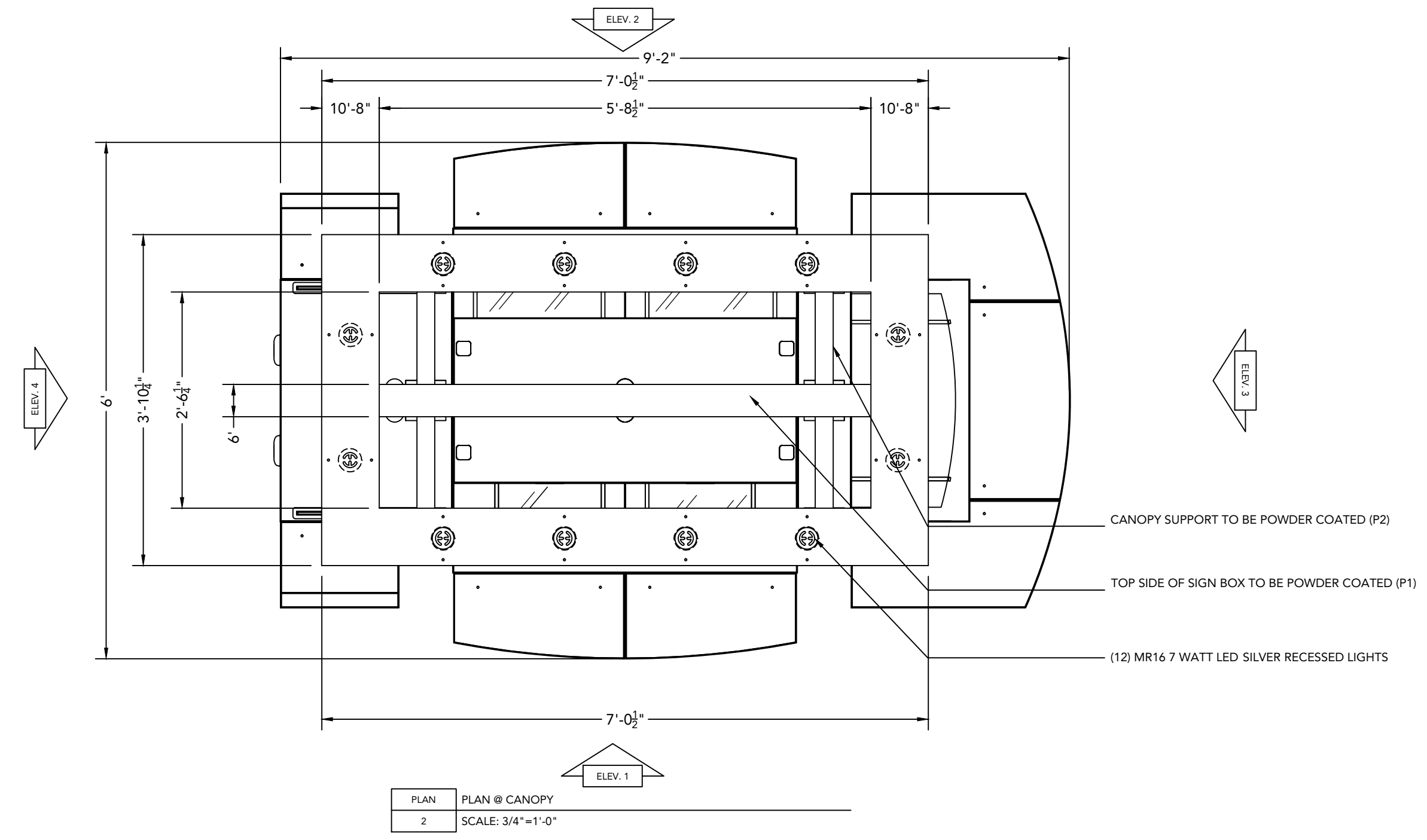
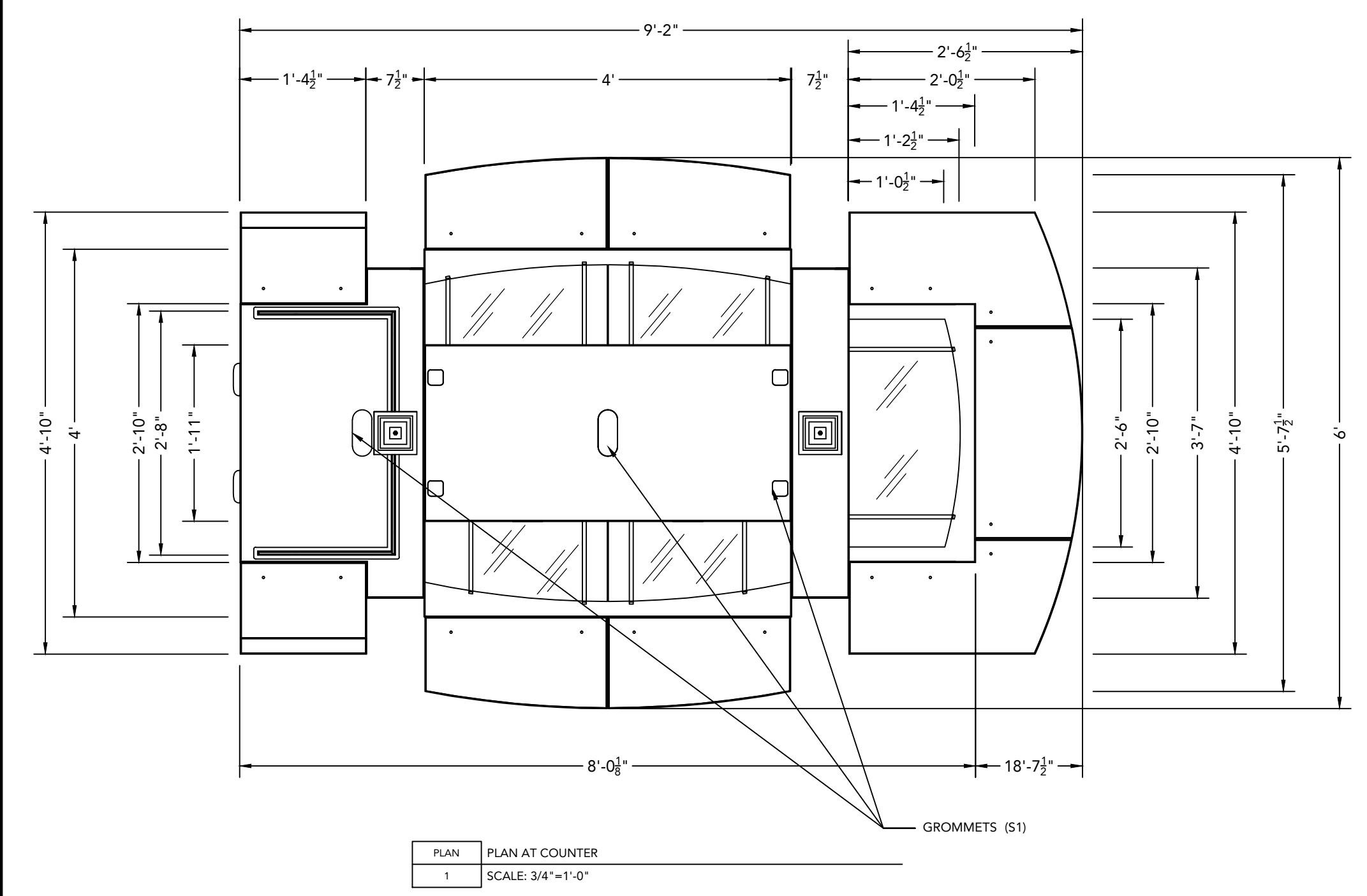
ZONE	REV	DESCRIPTION	DATE	EDIT BY

MATERIAL SCHEDULE

LABEL	PRODUCT	DESCRIPTION
P1	POWDER COAT	IRON GLIMMER P4
P2	POWDER COAT	TIGER DRYLAC RAL 9001
P3	POWDER COAT	TIGER DRYLAC RAL 8003
L1	LAMINATE	FORMICA 7484-58 CHERRY BIRCH
L2	LAMINATE	FORMICA 934-58 PEARL
E1	EDGE BANDING	REHAU CP30081 HUNTINGTON MAPLE 3MM
E2	EDGE BANDING	REHAU C100076 BISQUE 3MM
S1	SOLID SURFACE	AVONITE F1-4330 HONEY CRUNCH
S2	GLASS	3/8" SATEEN GLASS
S3	GLASS	FROSTED GLASS
S4	STEEL	STAINLESS STEEL

FINISH SCHEDULE

SUB-ASSEMBLY	DESIGNATION	DESCRIPTION	BRAND
BASE UNIT	KICK BASE	S4	
	BOLTS	STANDARD	
	BODY - UPPER CABINET	L2	
	BODY - LOWER CABINET	L1	
	BODY - CASH WRAP CABINET	L1	
	COUNTER - UPPER	S1	
	COUNTER - LOWER	S1	
	COUNTER - CASH WRAP	S1	
	PULL OUT SHELF	L1	
	CASH WRAP SHROUD PANEL	S3	
	CASH WRAP SHROUD FRAME	P1	
	CASH WRAP SHROUD CAP	PAINTED TO MATCH L1	
	EDGE BANDING - UPPER CABINET	E2	
	EDGE BANDING - LOWER CABINET	E1	
	EDGE BANDING - CASH WRAP	E1	
	EDGE BANDING - PULL OUT SHELF	E1	
	PULLS - UPPER CABINET	P2	
	PULLS - LOWER CABINET	P3	
	PULLS - CASH WRAP	P3	
	RECESSED STANDARDS - UPPER CABINET	P2	
RECESSED STANDARDS - LOWER CABINET	P3		
GLASS SHELVES	S2		
SHELF BRACKETS & SUPPORT RAILS-UPPER CABINET	P2		
SHELF BRACKETS & SUPPORT RAILS-LOWER CABINET	ANO CHROME FINISH		
LOCKS	NICKEL FINISH		
ADJUSTABLE SHELVING	S1		
CORNER ANGLES	P3		
GROMMETS	S1		
COLUMNS	COLUMNS	PAINTED TO MATCH L2	
	COLUMN CAP	P1	
	COLUMN BASE	PAINTED TO MATCH P1	
	COLUMN TOP	PAINTED TO MATCH P1	
CANOPY	COLUMN ACCENT BAND	PAINTED TO MATCH P1	
	CANOPY TOP PLATE	PAINTED TO MATCH P3	
	CANOPY LOWER PLATE	P2	
	CANOPY SUPPORT	P2	
TENANT SIGN	RECESSED LIGHTING FIXTURE	MR16, SILVER	
	RECESSED LIGHTING BULB	(12) 7W LED BULBS	
	EYE BOLTS	NICKEL	
	SIGN CHANNEL	P1	
	SIGN REPLACEMENT PANEL	CLEAR PLEX	
	SIGN BOX	SIGN WHITE	
	SIGN TOP PANEL	P1	
	SIGN LIGHTING	LED RIBBON LIGHT	
	CASH WRAP PULLS - DECORATIVE HARDWARE	TO BE POWDER COATED (P3)	
	CASH WRAP CABINET FACE	TO BE LAMINATED (L1), ALL DRAWER FACES, DOORS, TO BE LAMINATED (L1) WITH (E1) EDGE BANDING	



MACERICH
FASHION FAIR MALL
INTERIOR UNIT

This drawing, and the information contained herein, is the property of STAK Design INC. It may not be reproduced or copied in whole or in part. Any unauthorized use on any other project may be subject to penalty by law.

STAK DESIGN
1540 LUNA ROAD
CARROLLTON, TX 75006
972.323.0100
WWW.STAKDESIGN.COM



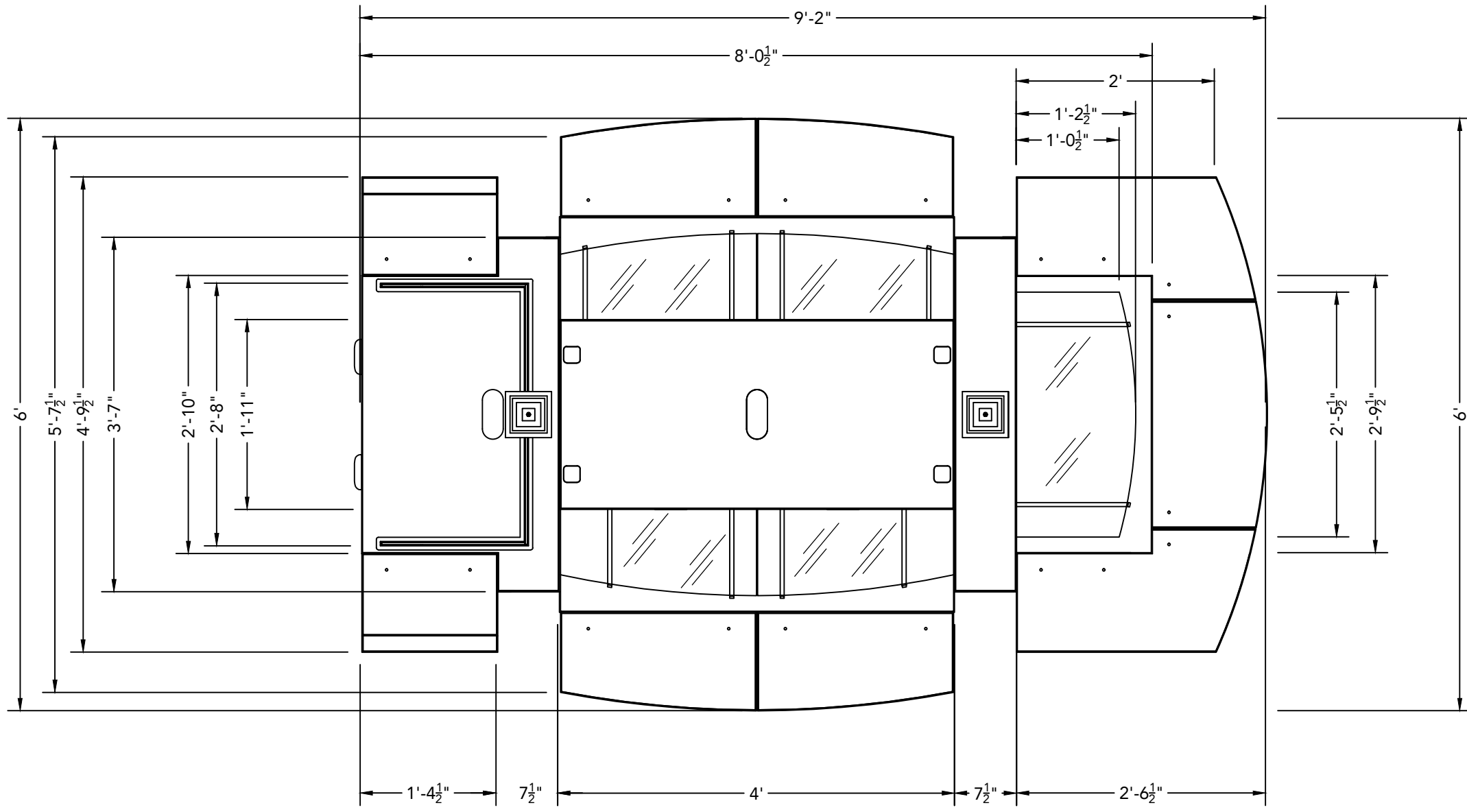
merchandising diagram

ELEV. 1

ELEV. 4

ELEV. 2

ELEV. 3



PLAN	PLAN AT COUNTER
1	SCALE: 3/4" = 1'-0"

JOB NUMBER: R12.2919
 DATE: 4.9.2012
 CLIENT: MACERICH
 PROJECT: FASHION FAIR MALL
 DESIGNER: H.WANG
 DETAILER: J.VASQUEZ
 PROJECT MANAGER: B.KUEHNE
 QUANTITY: 16
 DRAWING FILE: FASHION FAIR UNIT

MACERICH
 FASHION FAIR MALL
 INTERIOR RMU

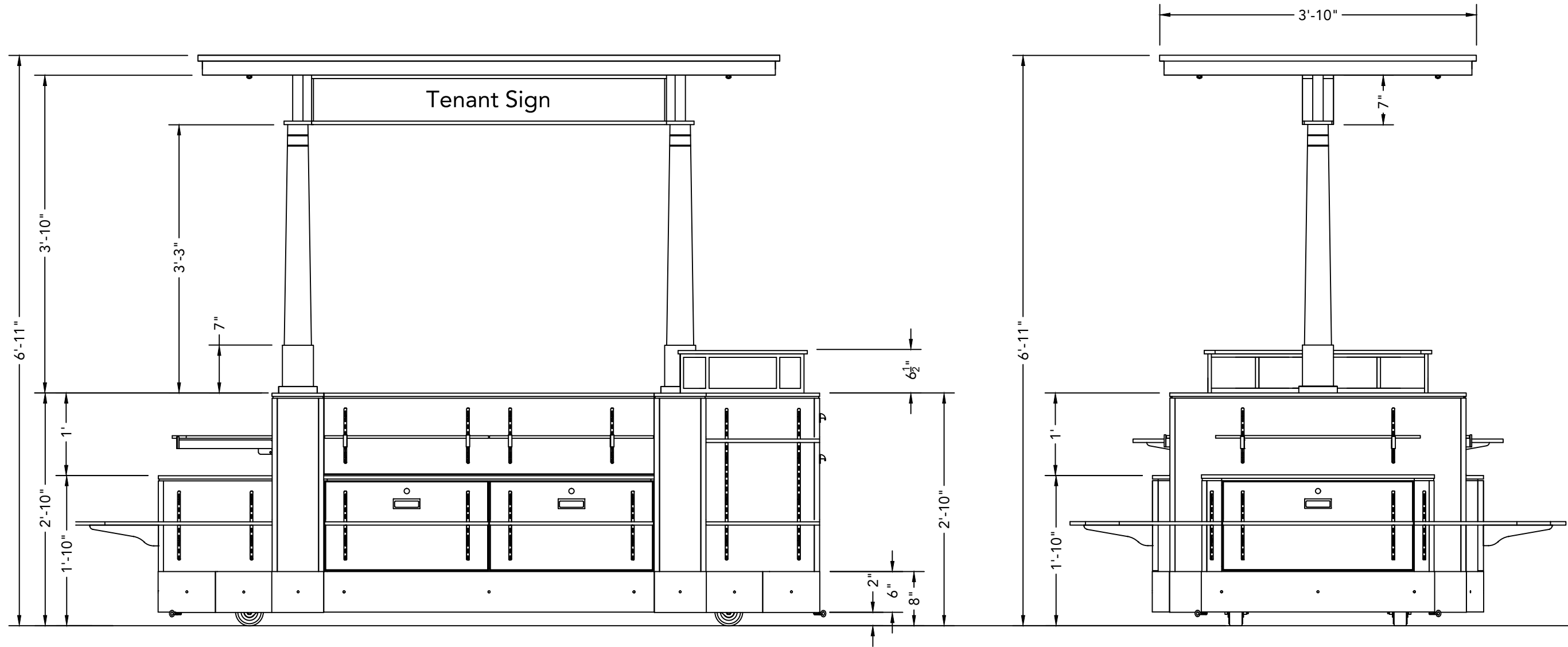
This drawing, and the information contained herein, is the property of STAK Design INC. It may not be reproduced or copied in whole or in part. Any unauthorized use on any other project may be subject to penalty by law.

STAK DESIGN

1540 LUNA ROAD
 CARROLLTON, TX 75006
 972.323.0100
 WWW.STAKDESIGN.COM



merchandising diagram



ELEV.	ELEVATION-SIDE FRONT
1	SCALE: 3/4"=1'-0"

ELEV.	ELEVATION-STORAGE END
2	SCALE: 3/4"=1'-0"

JOB NUMBER: R12.2919
 DATE: 4.9.2012
 CLIENT: MACERICH
 PROJECT: FASHION FAIR MALL
 DESIGNER: H.WANG
 DETAILER: J.VASQUEZ
 PROJECT MANAGER: B.KUEHNE
 QUANTITY: 16
 DRAWING FILE: FASHION FAIR UNIT

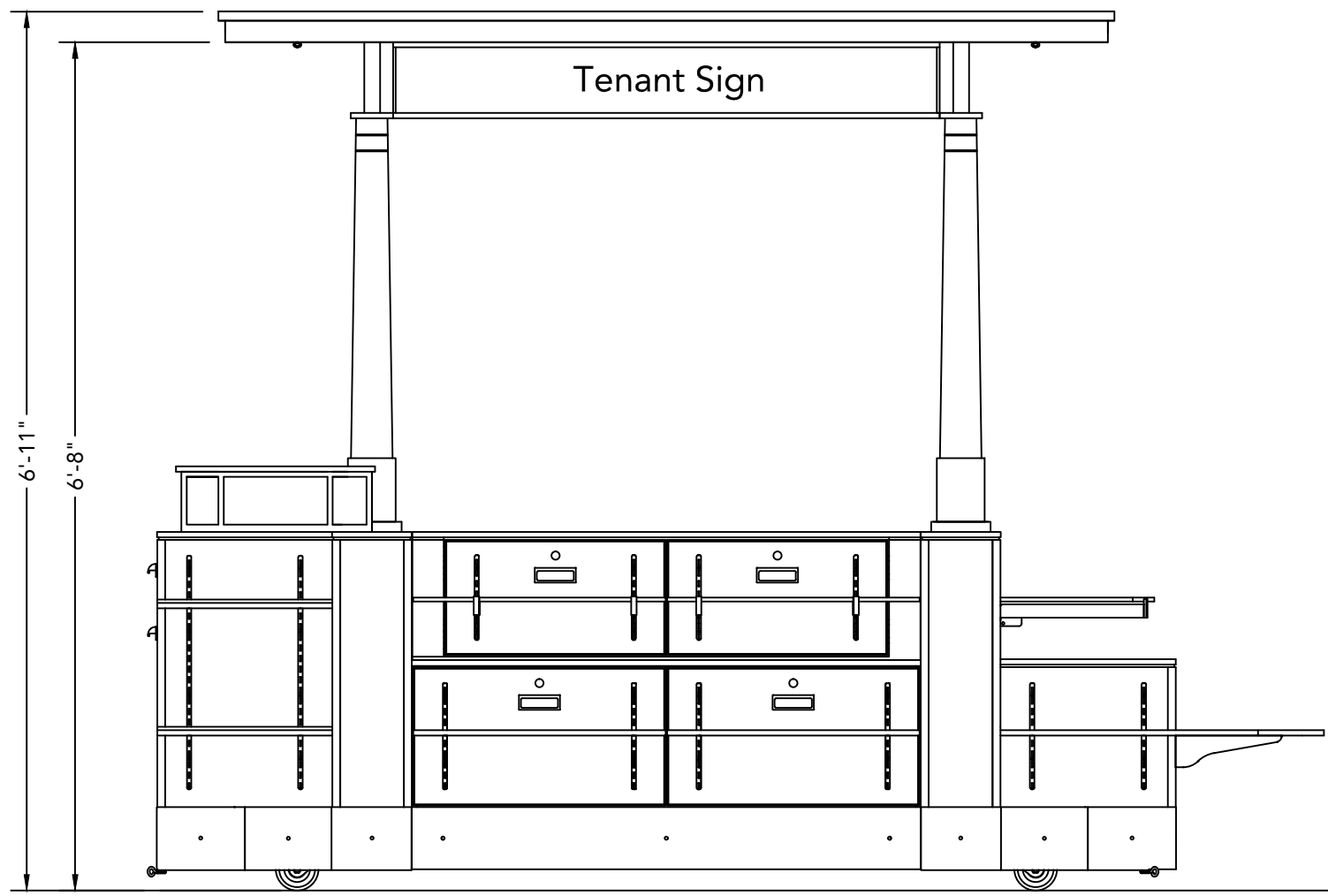
MACERICH
 FASHION FAIR MALL
 INTERIOR RMU

This drawing, and the information contained herein, is the property of STAK Design INC. It may not be reproduced or copied in whole or in part. Any unauthorized use on any other project may be subject to penalty by law.

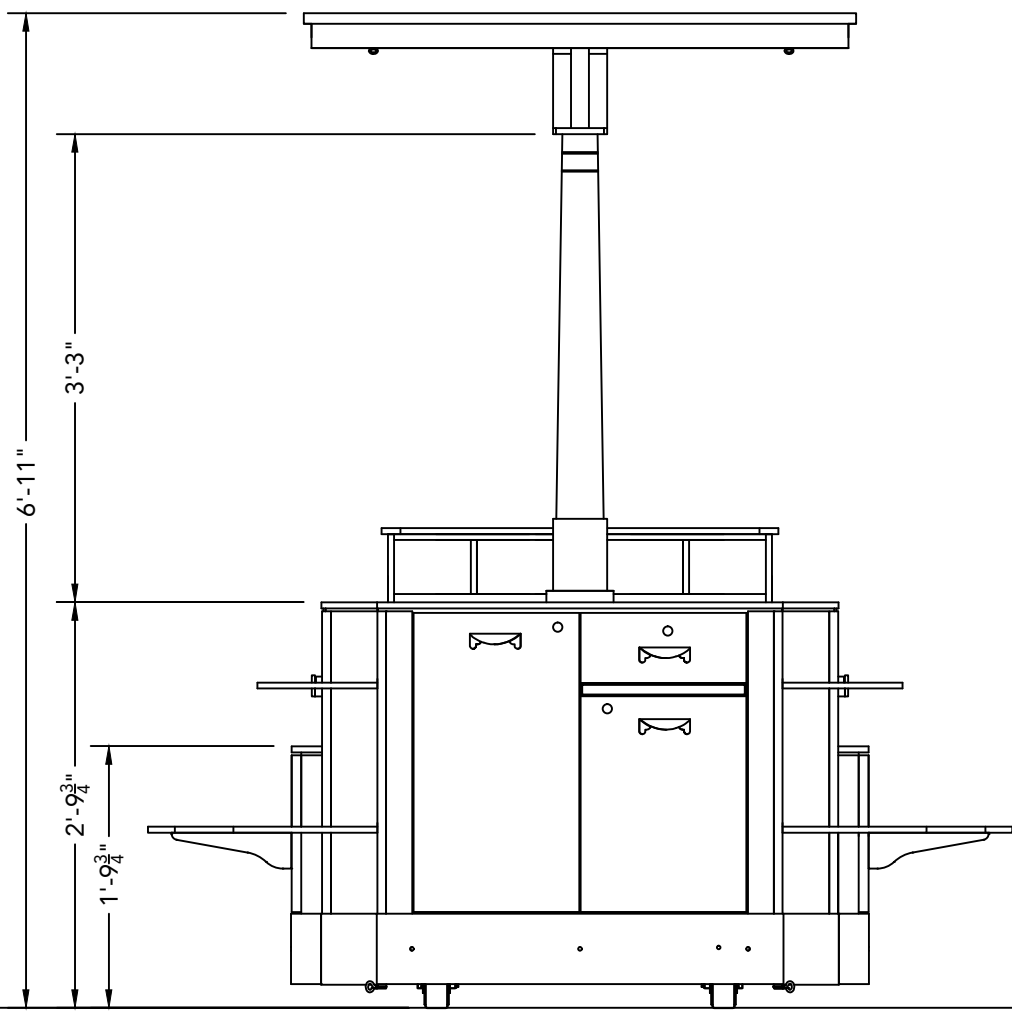


1540 LUNA ROAD
 CARROLLTON, TX 75006
 972.323.0100
 WWW.STAKDESIGN.COM





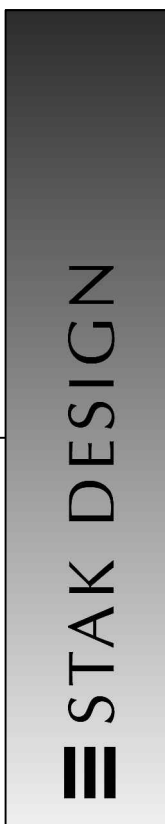
ELEV.	ELEVATION-SIDE BACK
3	SCALE: 3/4"=1'-0"



ELEV.	ELEVATION-CASH STAND
4	SCALE: 3/4"=1'-0"

MACERICH
 FASHION FAIR MALL
 INTERIOR RMU

This drawing, and the information contained herein, is the property of STAK Design INC. It may not be reproduced or copied in whole or in part. Any unauthorized use on any other project may be subject to penalty by law.



1540 LUNA ROAD
 CARROLLTON, TX 75006
 972.323.0100
 WWW.STAKDESIGN.COM

