

SANTAMONICAWORKPLACE.COM

Wish You Worked Here

SANTA MONICA WORK PLACE



Wish You Worked Here



One-of-a-kind Office Campus nestled in Santa Monica's Premier Shopping Center

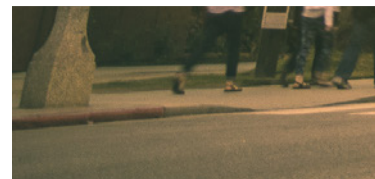
THE NEW RARE AND CONTEMPORARY
OFFICE CAMPUS SANTA MONICA WORK
PLACE IS SITUATED IN THE HEART OF
SANTA MONICA. WITH ITS POPULAR
LOCALE AND PROXIMITY TO LOS ANGELES,
SANTA MONICA WORKPLACE IS THE
ULTIMATE WORK DESTINATION.



LOCATION

A Notable Silicon Beach Address

KNOWN AS THE FLOURISHING HUB, SILICON BEACH HOUSES OVER 500 TECHNOLOGY & CREATIVE STARTUPS.





It's all in the Details



Spaces Available Up to 150,000 SF



17' 6" Floor to Floor Height



Concierge 7 Days a Week



92% Walkability Score



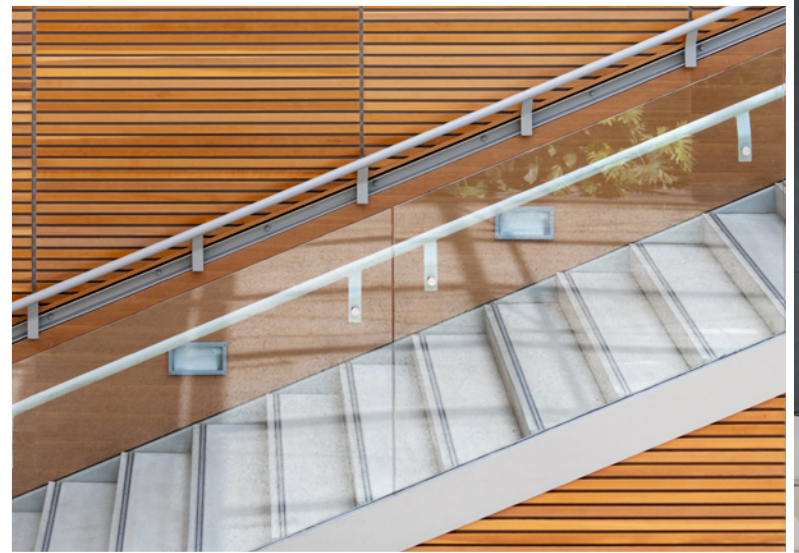
Electric Charging Stations



Transit Connected



Outdoor Space







Exclusive Access for Santa Monica Workplace Office Tenants

Be the first to receive news on sales, on-site and local events, and experiences at Santa Monica Place before anyone else

Be treated like a VIP 24/7 with premium concierge services like personal shopping, meal delivery and mobile car wash/detailing

Concierge Services

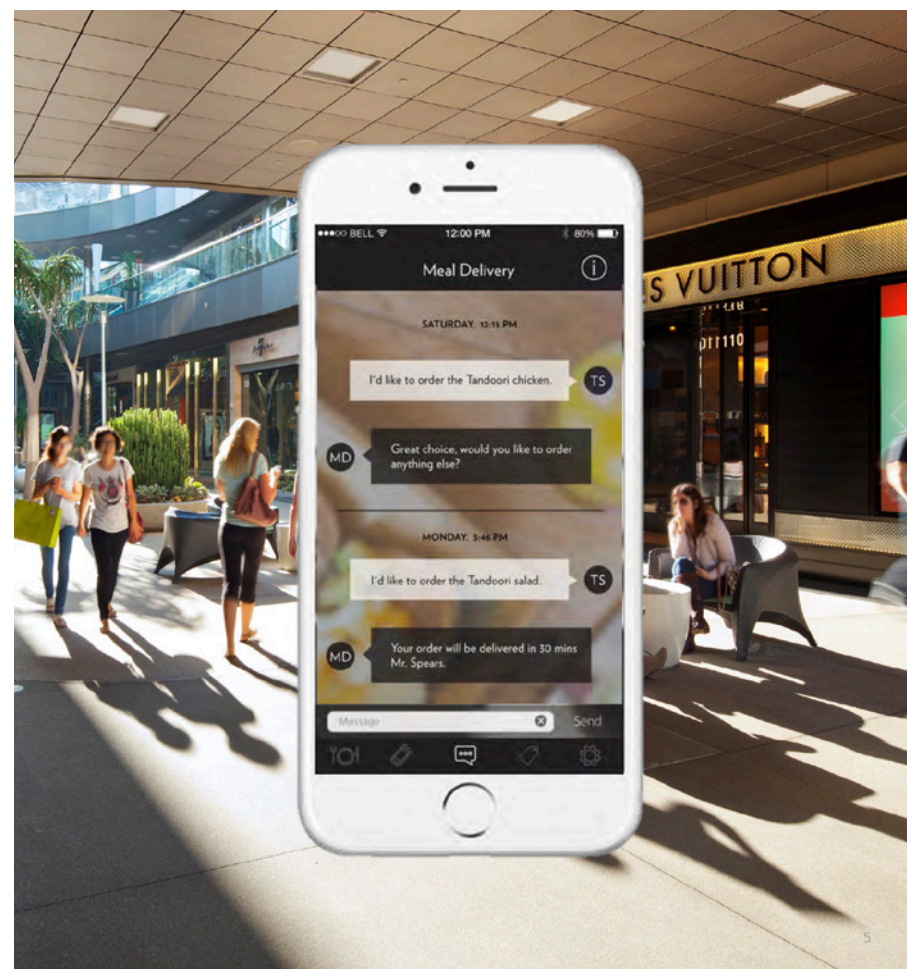
The Concierge Lounge is located on Level 2, adjacent to the proposed office space. Featuring a beachy vibe and resort level service, our concierge team handles all requests.

FEATURES:

- › Information on shops, dining, and attractions
- › Santa Monica visitor information
- › Text Concierge providing quick answers to asked questions

SMP ALL ACCESS EXCLUSIVE FEATURES:

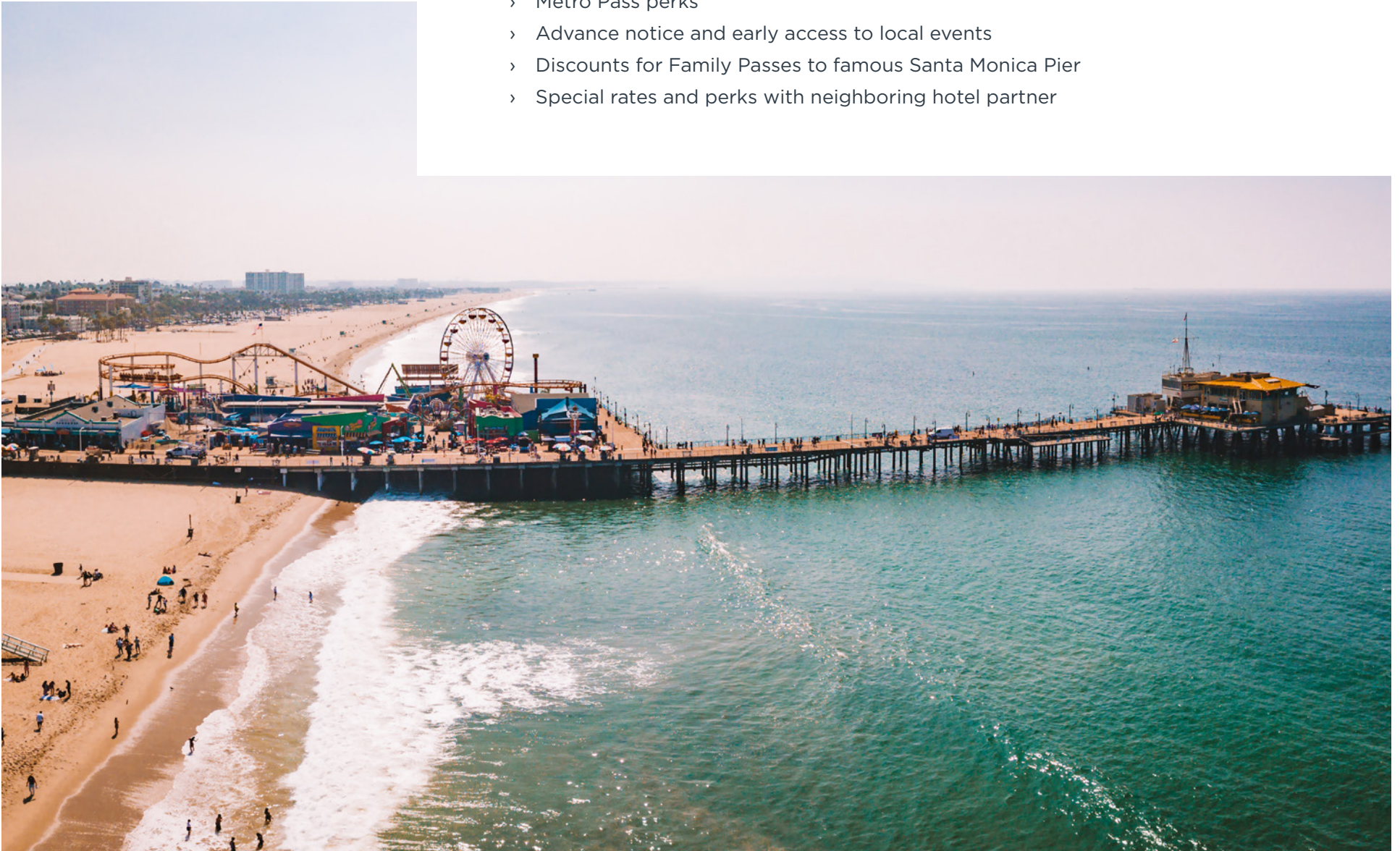
- › Complimentary luggage storage
- › Personal shopping services & complimentary gift wrapping
- › Same-day package delivery (within 10 mile radius)
- › Meal delivery from SMP dining establishments
- › Local dry cleaning delivery

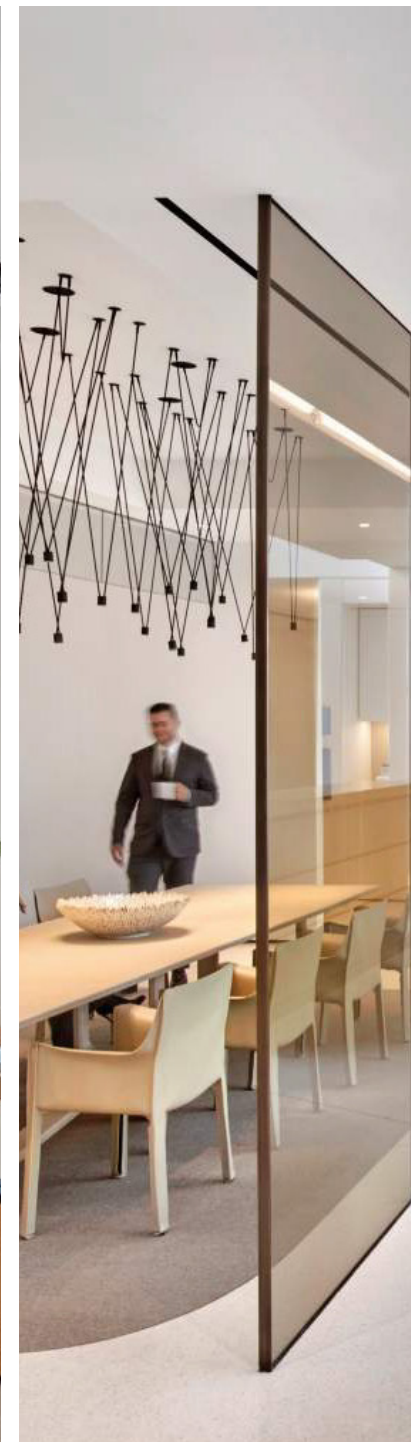


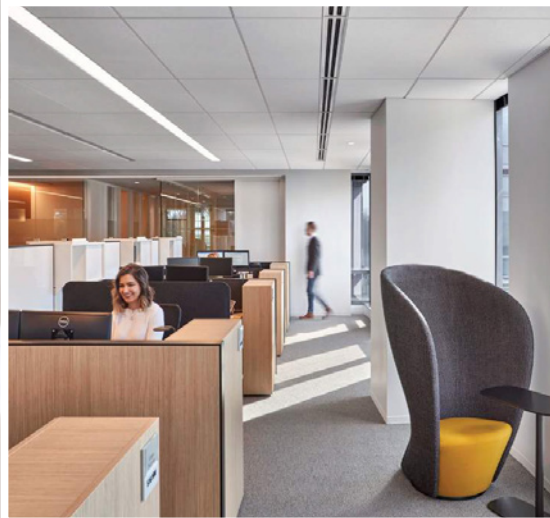
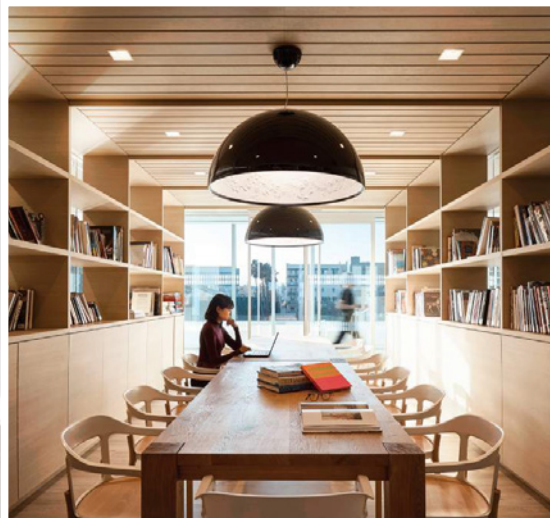
Work & Play Like a Local

Our center team is interwoven into the local landscape, making it easy to extend the best Santa Monica has to offer to our Santa Monica Place All Access members:

- › Metro Pass perks
- › Advance notice and early access to local events
- › Discounts for Family Passes to famous Santa Monica Pier
- › Special rates and perks with neighboring hotel partner



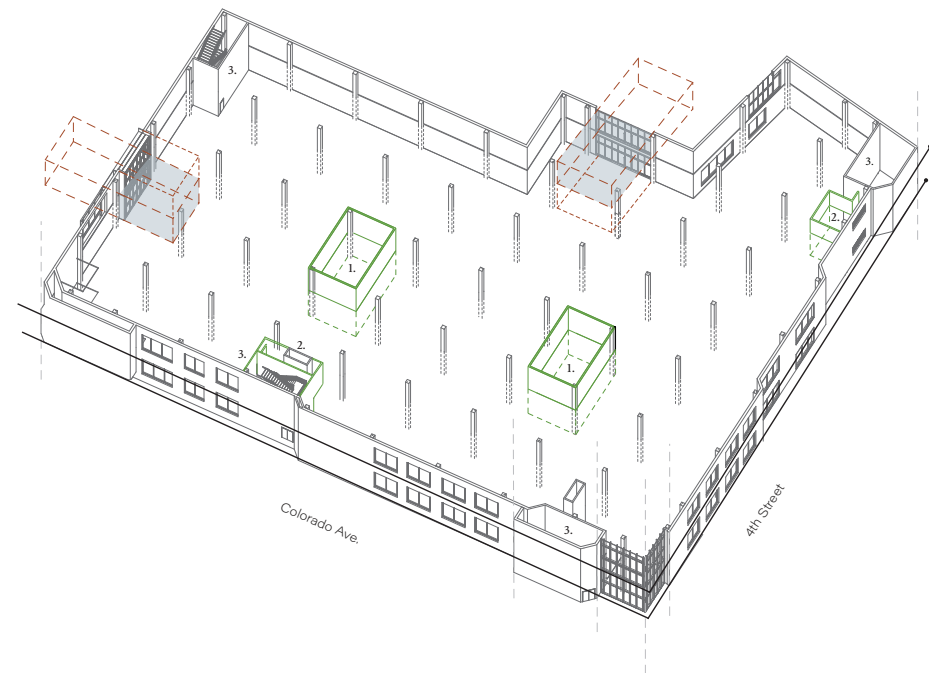




HEALTH & WELLNESS FEATURES

Prioritizing Health & Safety

DESIGNED WITH YOUR HEALTH IN MIND, SANTA MONICA WORKPLACE WILL FEATURE BRIGHT OPEN FLOOR PLANS TO PROMOTE SAFE SOCIAL DISTANCING AND ENHANCED CLEANING PROCEDURES THROUGHOUT THE WORKSPACE.



See What's Around

SANTA MONICA WORKPLACE IS STEPS BETWEEN AN EXCEPTIONAL SELECTION OF RESTAURANTS, RETAIL, HOSPITALITY AND FITNESS CLUBS.



Over 3,000 rooms in 30 hotels located within one mile



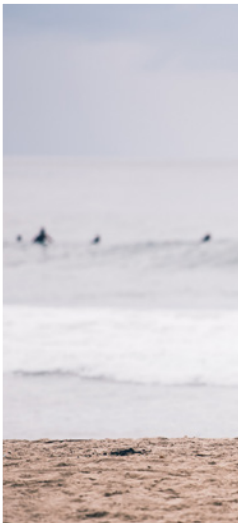
Adjacent to Expo Light Rail Station - Serving 4.9 million annual riders

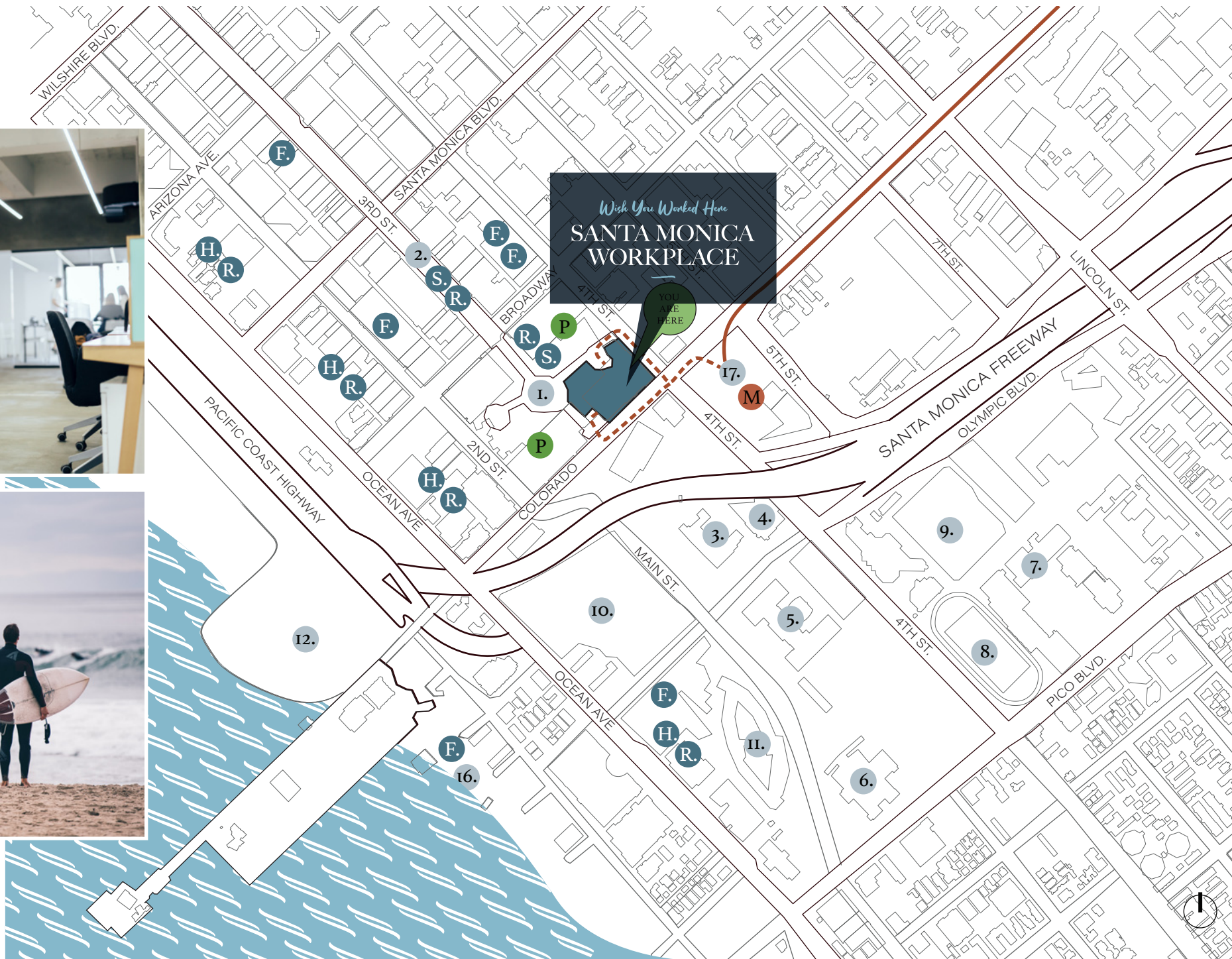


Abundant Parking - 5,200 spaces in adjacent and nearby parking garages



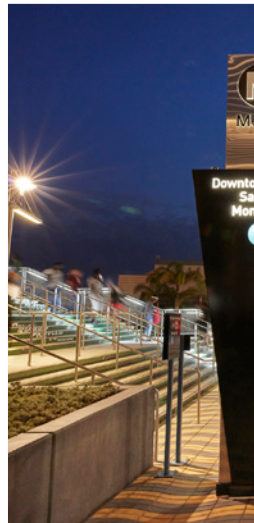
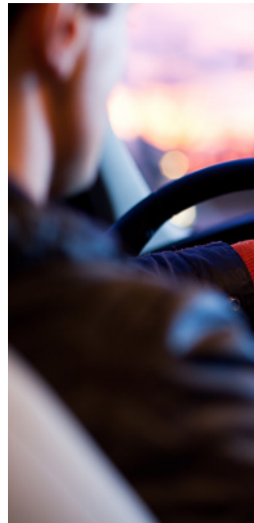
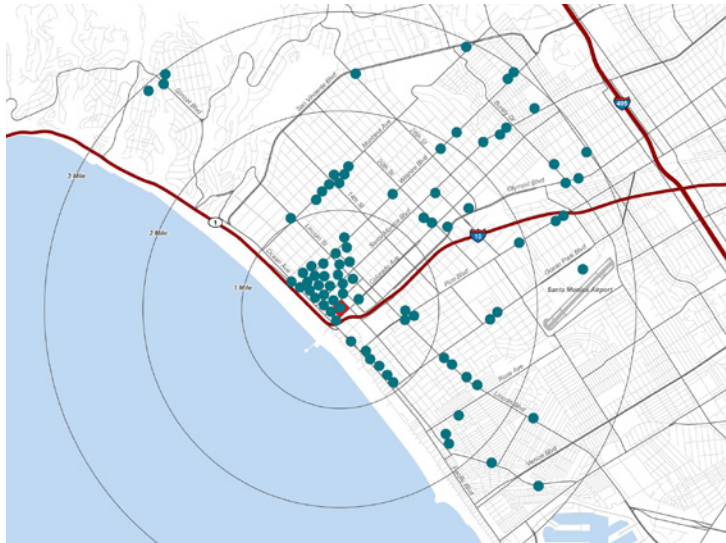
Fitness Centers - Over 37 fitness clubs located within one mile

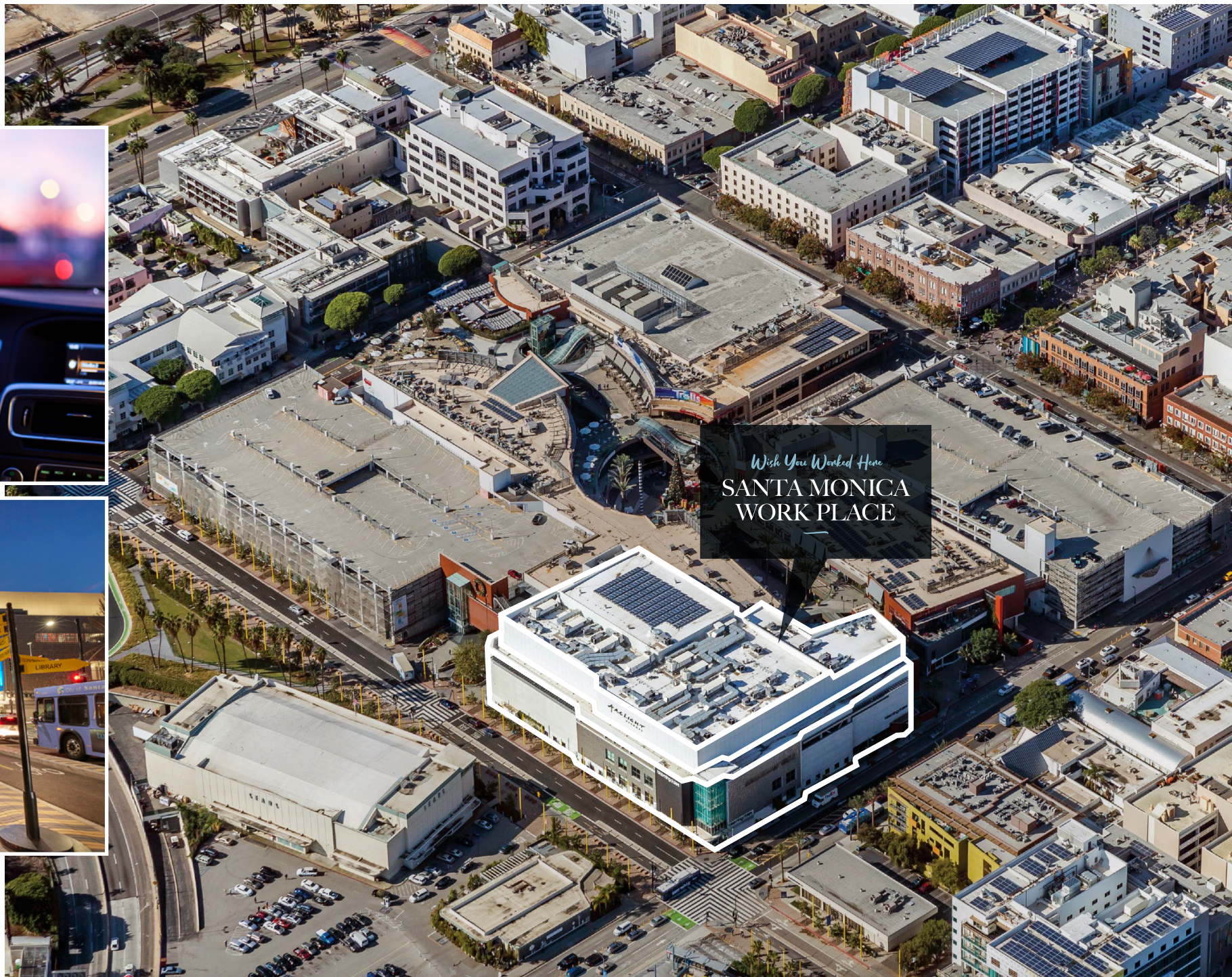




Conveniently Located

SANTA MONICA WORKPLACE PROVIDES
EASY ACCESS TO LA'S MAIN FREEWAYS
AND THE ADJACENT METRO STATION.





Area Map

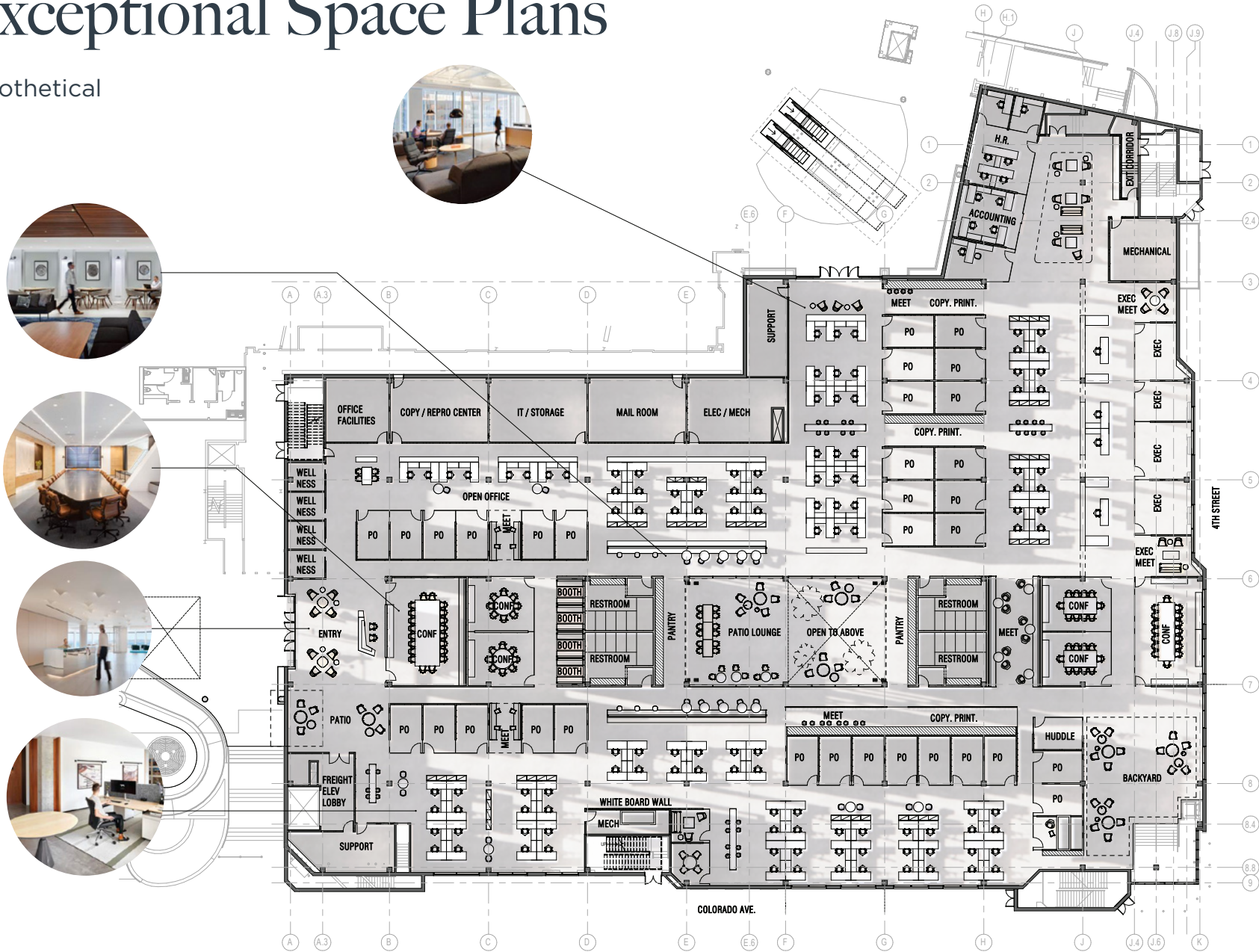


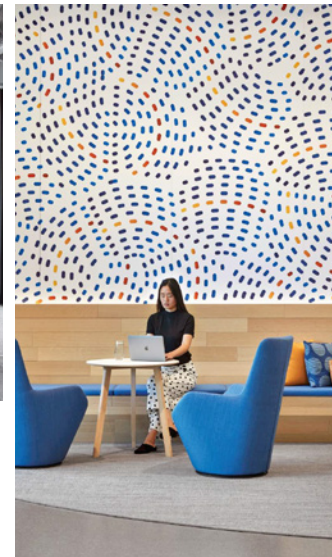
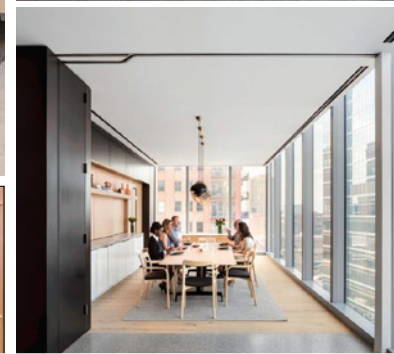
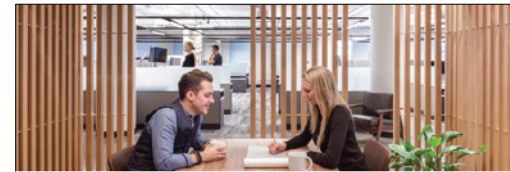
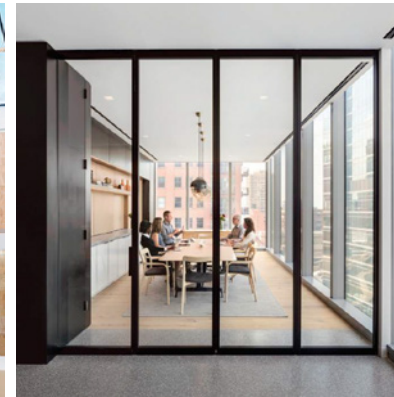
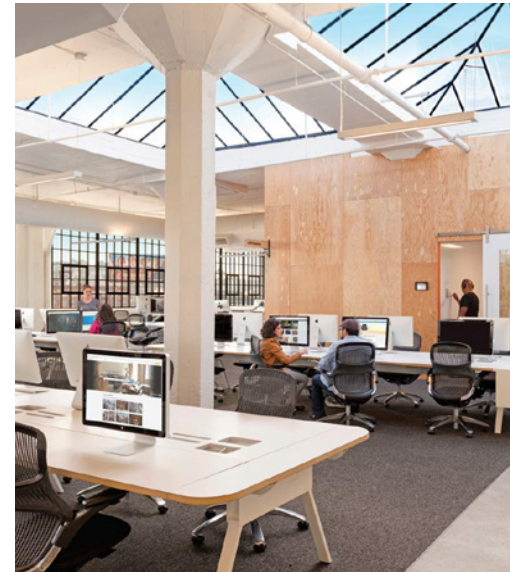
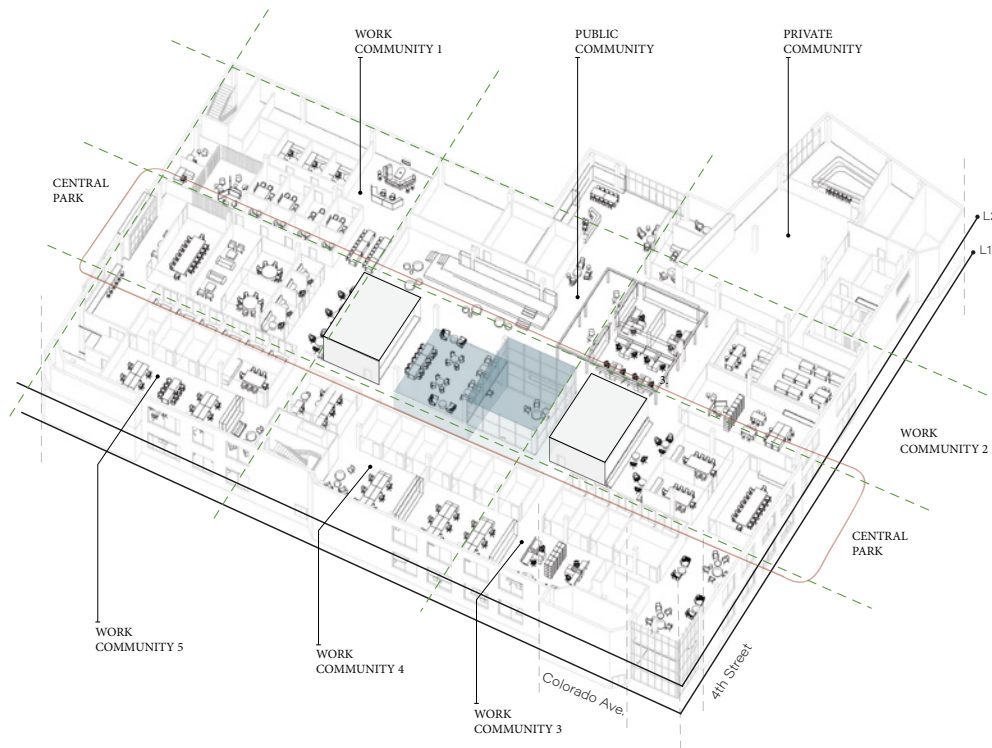
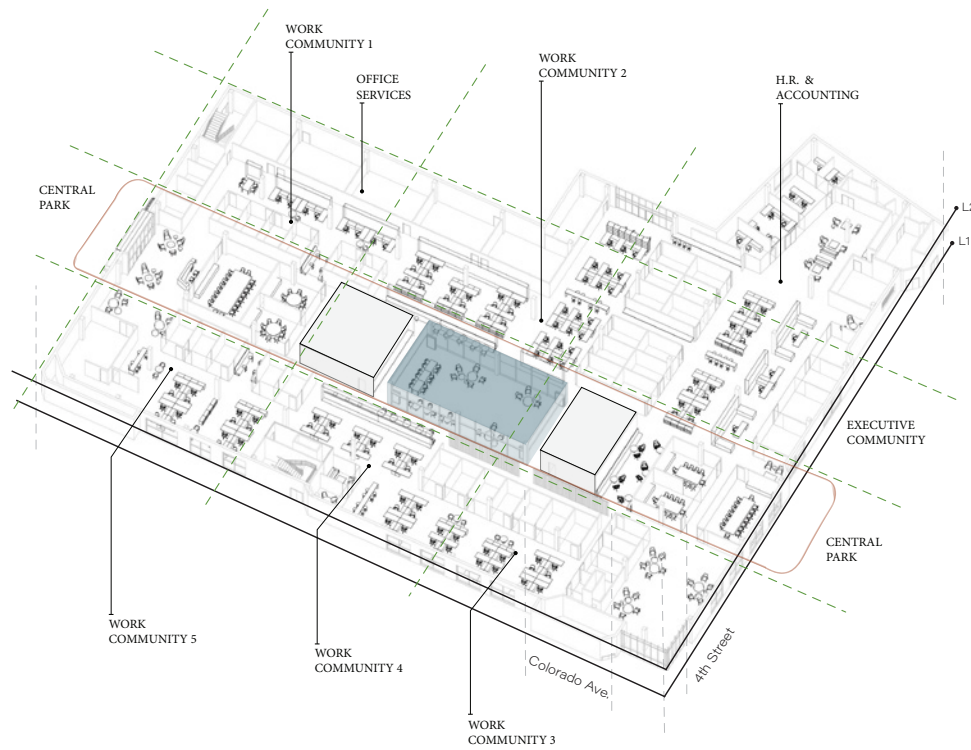
Amenities Map



Exceptional Space Plans

Hypothetical









SANTAMONICAWORKPLACE.COM

Wish You Worked Here

SANTA MONICA WORKPLACE

Jeffrey S. Pion

Vice Chairman

Lic.00840278 | 310.550.2537

Jeff.Pion@cbre.com

Michelle Esquivel-Hall

Executive Vice President

Lic.01290582 | 310.550.2525

Michelle.Esquivel@cbre.com

Drew Pion

Associate

Lic. 02085229 | 310.550.2566

Drew.Pion@cbre.com

© 2020 CBRE, Inc. All rights reserved. This information has been obtained from sources believed reliable, but has not been verified for accuracy or completeness. You should conduct a careful, independent investigation of the property and verify all information. Any reliance on this information is solely at your own risk.

CBRE

