

MATERIAL SCHEDULE		
LABEL	PRODUCT	DESCRIPTION
P1	POWDER COAT	MORTON PC "BEECHWOOD" 20-8247HY
P2	POWDER COAT	RAL 8028 (BROWN)
P3	POWDER COAT	RAL 7022 (DARK GREY)
P4	PAINT	PAINT MATCH RAL 8028 (BROWN)
P5	PAINT	PAINT MATCH RAL 7022 (DARK GREY)
S1	ZODIAQ	FLAX
S2	CORIAN	WILSONART ANTIQUE WHITE 1572SL
L1	LAMINATE	WILSONART MONTANA WALNUT 7110T-60
E1	EDGE BAND	DOLLEKEN BROWN 3793 3MM

FINISH SCHEDULE					
SUB-ASSEMBLY	DESIGNATION	DESCRIPTION	BRAND	MATERIAL	
				COLOR	NUMBER
BASE UNIT	CASTER	HEAVY-DUTY COLSON CASTERS			
	KICK BASE				
	EYEBOLT	STANDARD			
	BOLTS TO KICK BASE	STAFFAST BLACK HARDWARE STANDARD			
	BODY OF UNIT BASE	L1			
	EDGE BANDING-DOORS	E1			
	EDGE BANDING-DRAWERS	E1			
	PULL OUT SHELF	L1			
	LOWER SHELVING	S2			
	SHELVING BRACKETS	ANACHROME			
	GLASS SHELVING	1/4" CLEAR TEMPERED GLASS			
	GLASS SHELF SUPPORTS	P2			
	PULLS BODY OF UNIT	P2			
	CASH WRAP PULLS	P2			
	LOCKS	NICKEL FINISH			
STANDARDS	P2				
GROMMETS	BEIGE				
COUNTERTOP	S1				
COUNTER TOP REVEAL	P4				
CASH WRAP COUNTER	L1				
CASH WRAP EDGE	E1				
CORNER ANGLES	P2				
COLUMNS	COLUMN FRAME	P1			
	LIGHTBOX FRAME	P1			
	LIGHTBOX SHELF SUPPORTS	P1			
	GLASS SHELVING	1/4" CLEAR TEMPERED GLASS			
	LOWER SHELVING	S2			
TOP	LIGHTBOX	LED			
	HEADER 1	P4			
	HEADER 2	P5			
	HEADER 2 REVEAL	P4			
	RECESSED FIXTURES	SILVER			
TENANT SIGN	RECESSED LIGHTS	(24) 4 WATT LED			
	EYE BOLT	STANDARD			
	GRID FRAME	P2			
	3" X 3" WIRE GRID	P2			
	SIGN FRAME CHANNEL	P1			
	SIGN REPLACEMENT PANEL	1/4" CLEAR ACRYLIC WITH DARK GRAY VINYL GRAPHICS			

STAK DESIGN

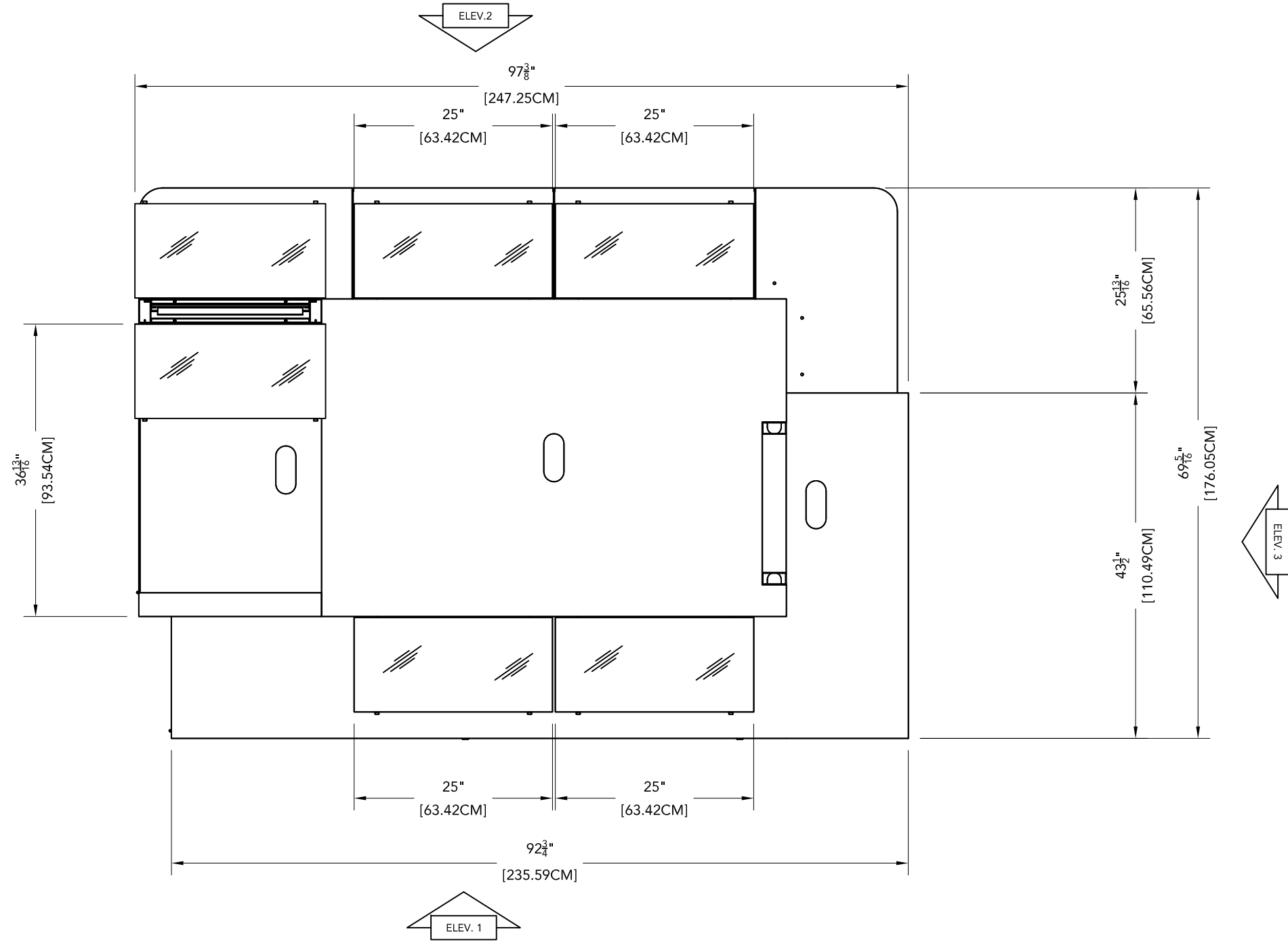
PROJECT: MACERICH
 CLIENT: ARDEN FAIR
 DRAWING: CUSTOM
 DATE: 04.2010

PROJECT NO: 20
 DRAWING NO: ARDEN FAIR_20_CAD VIEWS
 SCALE: 1" = 4'-0"

DESIGNED BY: M. MONKOWSKI
 DRAWN BY: J. MOELLER
 CHECKED BY: D. ASBENT

STAK DESIGN INC.
 340 LUNA ROAD
 CARROLLTON, TX 75006
 TEL: 972-323-0100
 WWW.STAKDESIGN.COM

merchandising diagram

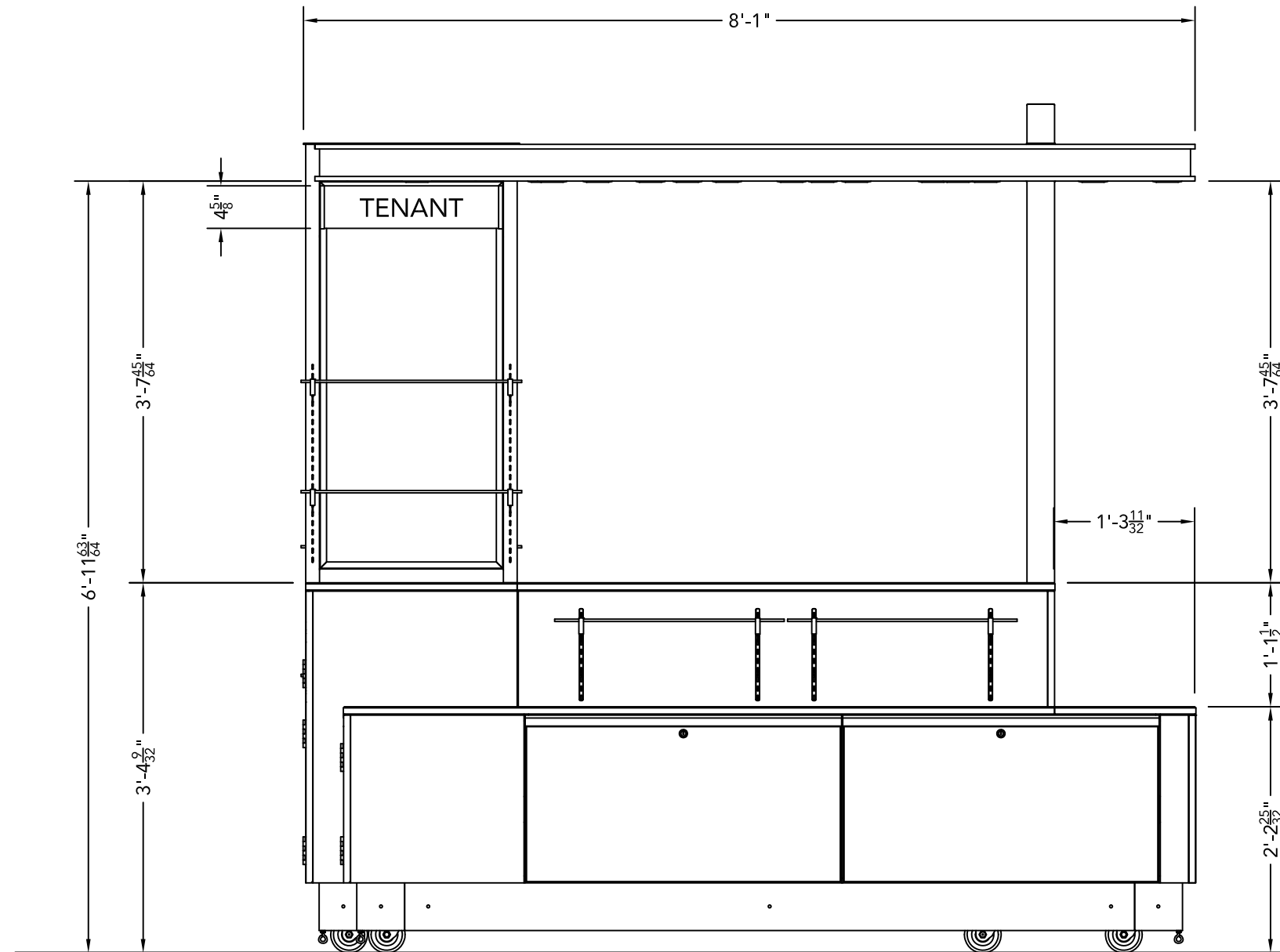


PLAN	PLAN AT COUNTER
1	SCALE: 3/4" = 1'-0"

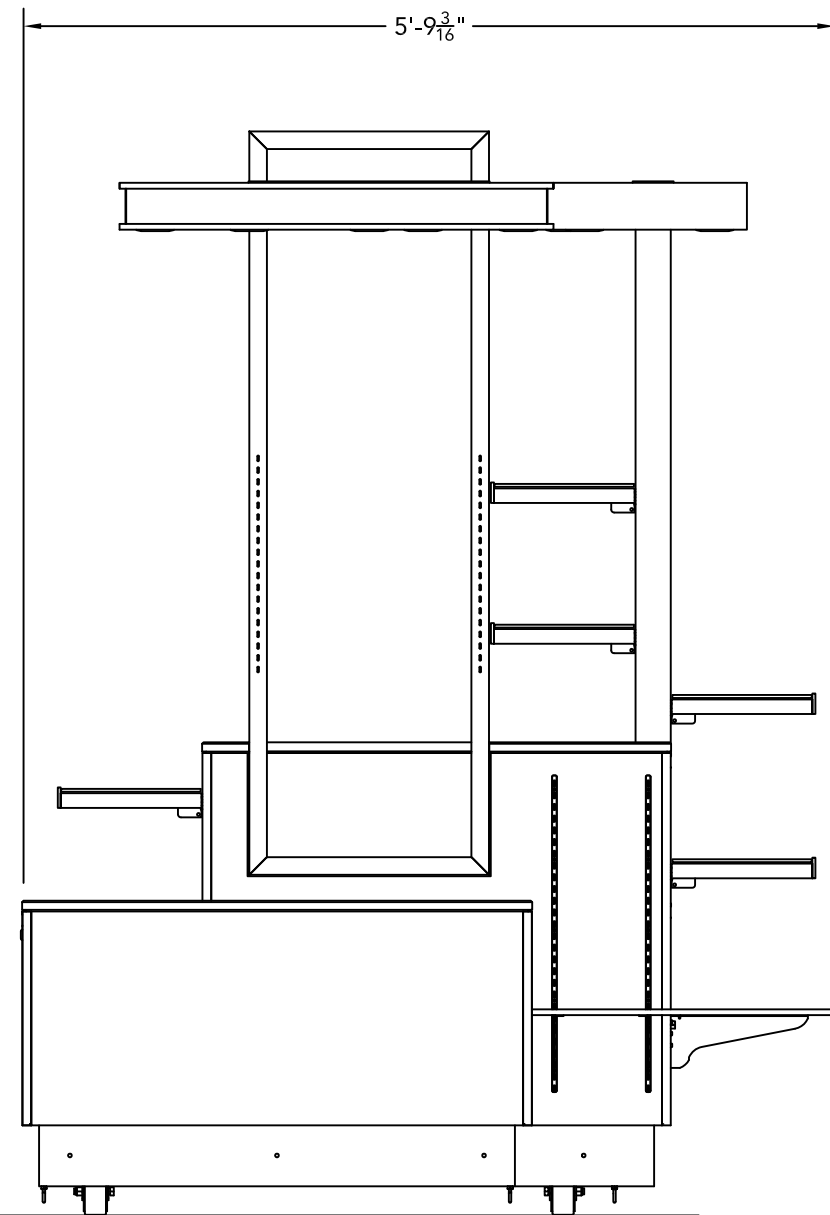
STAK DESIGN

CLIENT: MACERICH		JOB NUMBER: R19 2777	DATE: 3.4.2010
JOB NAME: ARDEN FAIR		SKOSK TYPE: RMU	CITY: 20
JOB DESCRIPTION: CUSTOM		DRAWING FILE: ARDEN FAIR_2D_CAD V3.DWG	PLOT SCALE: 1:1
DESIGNER: M.MONKOWSKI	DETAILER: J. MOELLER	PROJECT MANAGER: D. ARIENT	
G.COHN:	L.W.KEOWN:	FACILITY: STAK DESIGN INC. 1540 LUNA ROAD CARROLLTON, TX 75006	
DATE:	DATE:	PHONE: 972.323.0100	FAX: 972.323.0126
This drawing, and the information contained herein, is the property of STAK Design INC. It may not be reproduced or copied in whole or in part. Any unauthorized use on any other project may be subject to penalty by law.		WEB: WWW.STAKDESIGN.COM	

merchandising diagram



ELEV.	ELEVATION-SIDE FRONT
1	SCALE: 3/4"=1'-0"

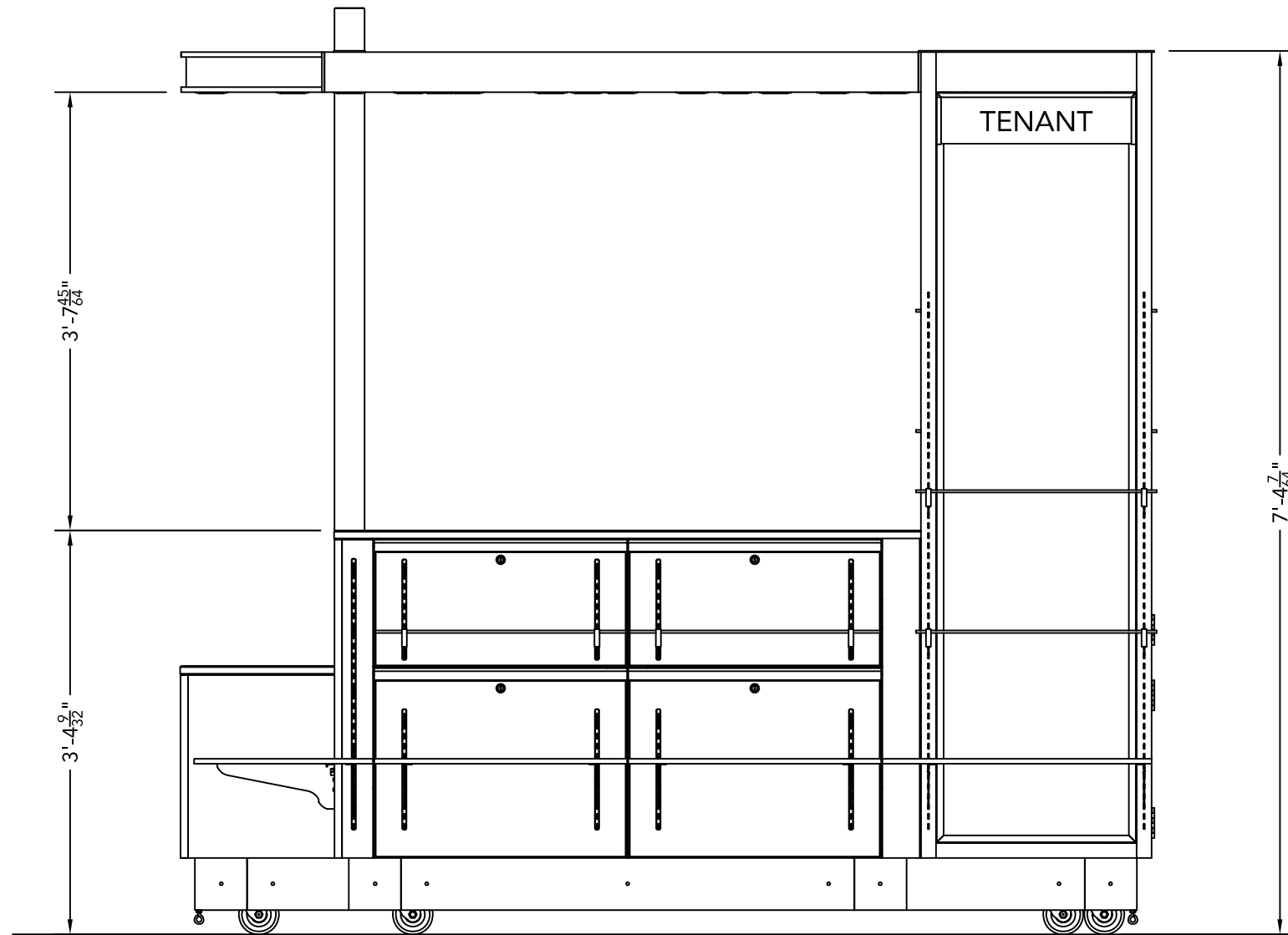


ELEV.	ELEVATION-STORAGE END
2	SCALE: 3/4"=1'-0"

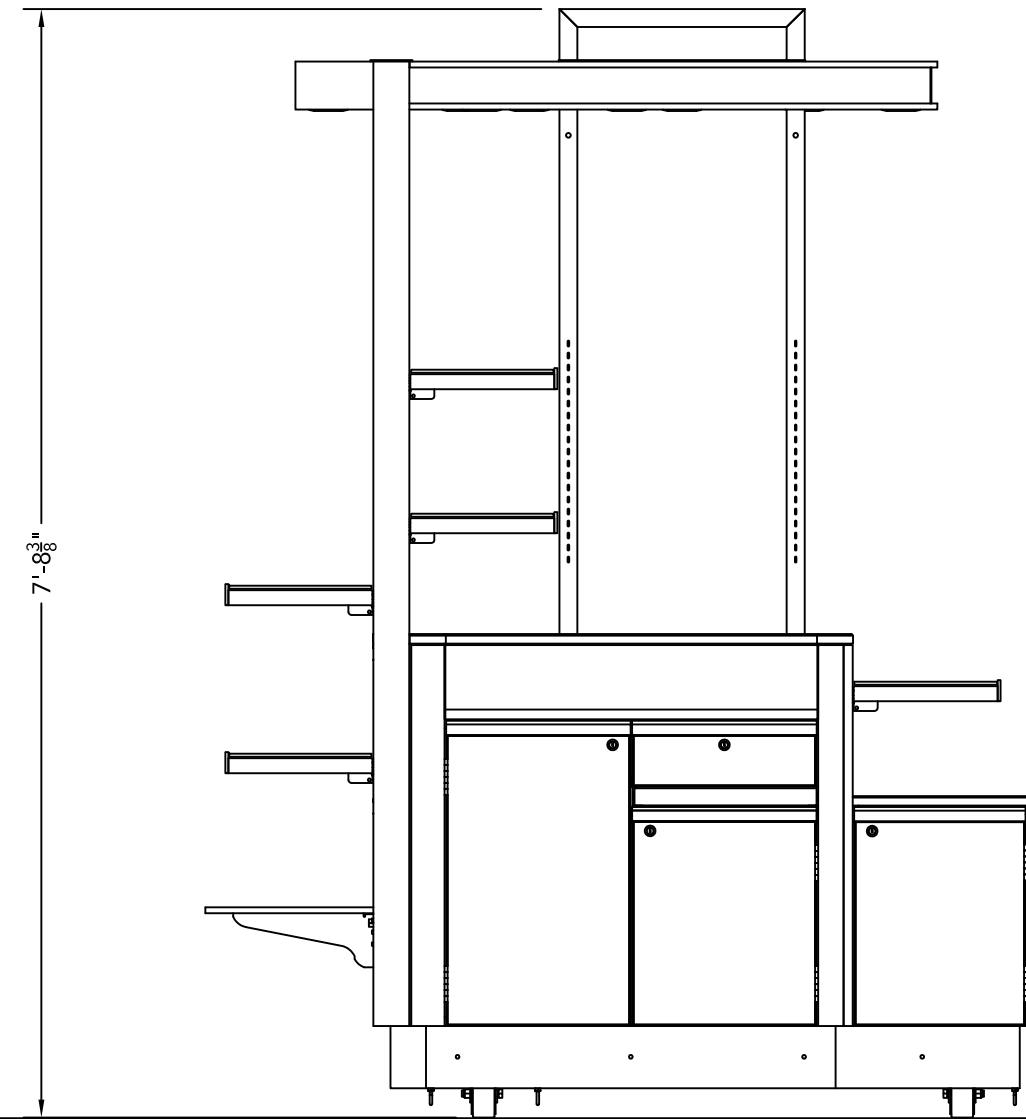
STAK DESIGN

CLIENT: MACERICH		JOB NUMBER: R19 2777	DATE: 3.4.2010
JOB NAME: ARDEN FAIR		AKSK TYPE: RMU	QTY: 20
JOB DESCRIPTION: CUSTOM		DRAWING FILE: ARDEN FAIR_2D_CAD V3.DWG	
DESIGNER: M.MONKOWSKI	DETAILER: J. MOELLER	PROJECT MANAGER: D. ARIENT	FACILITY: STAK DESIGN INC. 1540 LUNA ROAD CARROLLTON, TX 75006
G.COOR:	L.W.KEOWN:	This drawing, and the information contained herein, is the property of STAK Design INC. It may not be reproduced or copied in whole or in part. Any unauthorized use on any other project may be subject to penalty by law.	
DATE:	DATE:	PHONE: 972.323.0100	FAX: 972.323.0126
		WEB: WWW.STAKDESIGN.COM	

merchandising diagram



ELEV.	ELEVATION-SIDE BACK
3	SCALE: 3/4"=1'-0"



ELEV.	ELEVATION-CASH STAND
4	SCALE: 3/4"=1'-0"

STAK DESIGN

CLIENT: MACERICH		JOB NUMBER: R19.2777	DATE: 3.4.2010
JOB NAME: ARDEN FAIR		MOCK TYPE: RMU	QTY: 20
JOB DESCRIPTION: CUSTOM		DRAWING FILE: ARDEN FAIR_2D_CAD V3.DWG	
DESIGNER: M.MONKOWSKI	DETAILER: J. MOELLER	PROJECT MANAGER: D. ARIENT	FACILITY: STAK DESIGN INC. 1540 LUNA ROAD CARROLLTON, TX 75006
G.CONN:	L.V.KEOWN:	This drawing, and the information contained herein, is the property of STAK Design INC. It may not be reproduced or copied in whole or in part. Any unauthorized use on any other project may be subject to penalty by law.	
DATE:	DATE:	PHONE: 972.323.0100	FAX: 972.323.0126
		WWW.STAKDESIGN.COM	